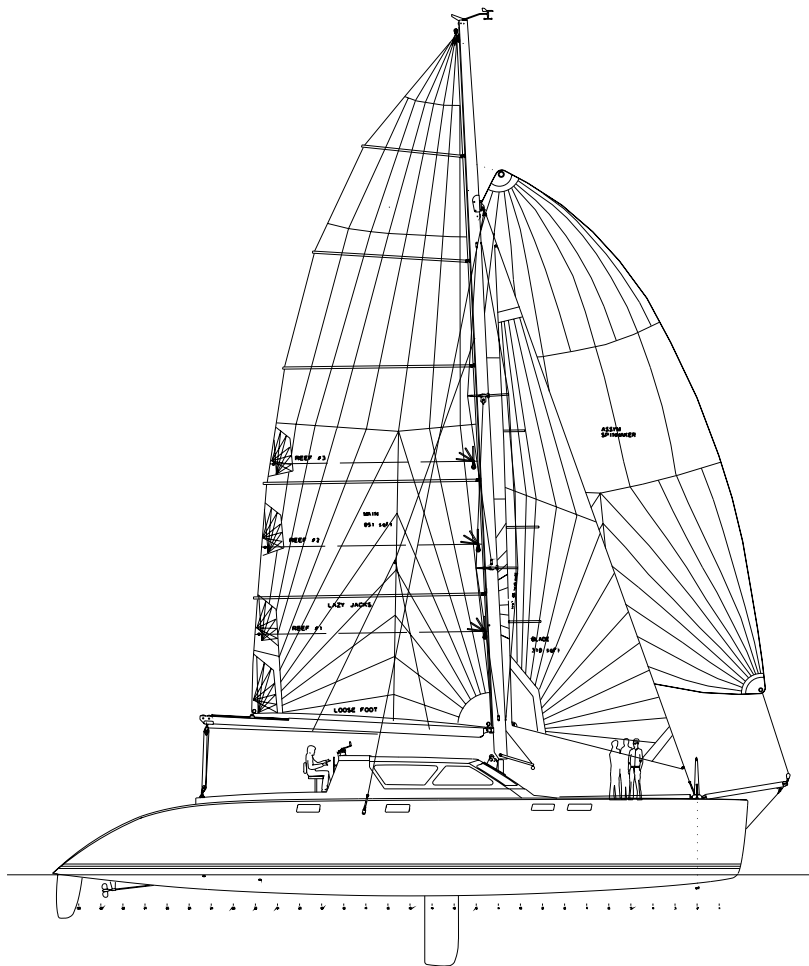


WHAT DO THE DRAWINGS LOOK LIKE?

SOME TYPICAL SHEETS FROM THE DRAWING SETS



INDEX

- 1 COVER
- 2 SIDE VIEW
- 3 HULL CORE
- 4 TOP VIEW
- 5 FORE AND AFT
- 6 HULL LINES
- 7 SAIL PLAN
- 8 INTERIOR PLAN
- 9 CONSTRUCTION PLAN
- 10 HULL CENTERLINE SECTIONS
- 11 BULKHEAD PATTERNS
- 12 DETAIL SECTION
- 13 VESSEL CENTERLINE SECTION
- 14 CONNECTIVE DETAILS
- 15 REFLECTED CEILING PLAN
- 16 MAST PLAN
- 17 MAST DETAILS
- 18 BOARD AND RUDDER PLAN
- 19 CONNECTIVE PATTERNS OR
- 20 CONNECTIVE LAMINATE OR
- 21 CONNECTIVE LAMINATE AFT
- 22 CONNECTIVE LINES
- 23 HULL LAMINATES
- 24 CABIN VIEWS
- 25 CABIN PATTERN
- 26 CABIN LINES
- 27 INTERIOR ELEVATIONS (CABINETS)
- 28 ENGINE INSTALLATION
- 29 DETAILS
- 30 RUDDER PATTERNS
- 31 BOARD PATTERNS
- 32 METALWORK PATTERNS
- 33 DECK HARDWARE
- 34 BOW TUBE DESIGN
- 35 BOW TUBE PATTERNS
- 36 BOOM PATTERNS
- 37 BOOM DESIGN
- 38 HOUND
- 39 DECK LINES
- 40 TANKS
- 41 CHAINPLATE

12/12/'96

(206)284-6346 FAX: (206)283-4106

USA (206)284-6346

SEATTLE, WA, 98119

DESIGNS: 612 1/2 V. MCGRAW

COVER

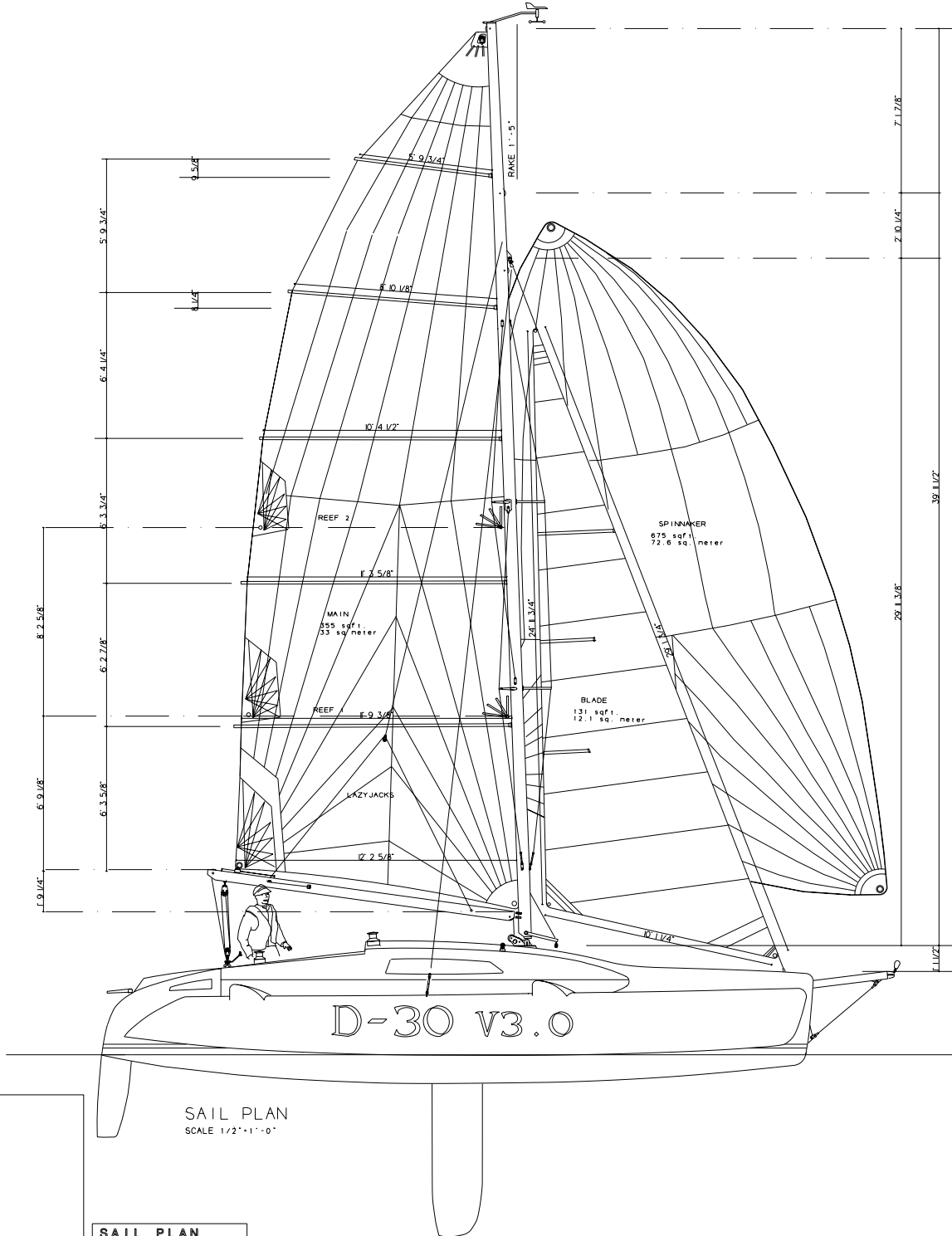
63' CATAMARAN

KHSD
KURT HUGHES SAILING

1

SAIL TABLE

SAIL NAME	WIND	AREA	FOOT	LUFF	MATERIAL	WEIGHT	REMARKS
MAINSAIL		355 sf	12'-4 3/4"	38'-3"	daoron	6.5 oz	nylon alternate
BLADE	10-30kt	131 sf	10'-4 1/2"	29'-13 1/4"	daoron	6.5 oz	nylon alternate
GENOA	10-18 kt	365 sf			nylon	3.8 oz	150%
SPINNAKER	10-35 kt	675 sf			polyester	.85 oz	for reaching
DRIFTER							
STORM JIB							



SAIL PLAN
SCALE 1/2"=1'-0"

SAIL PLAN

KHSD

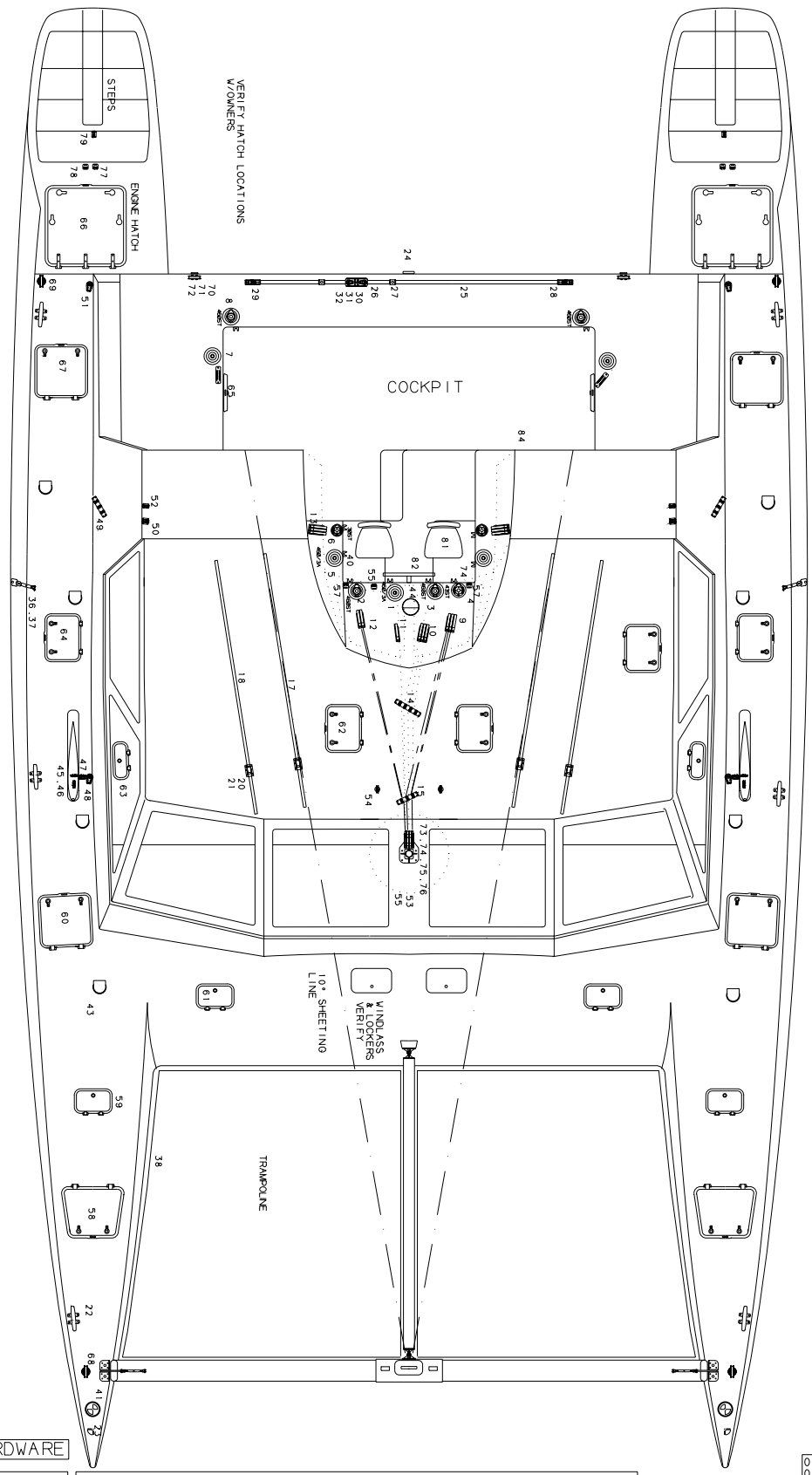
30' DEMOUNTABLE TRIMARAN

08/24/93

KURT HUGHES SAILING DESIGNS - 612 1/2 W. McGRAW, SEATTLE, WA. 98119 USA (206)284-6346 FAX - (206)283-4106

DECK HARDWARE
SCALE 1/2"=1'-0"

27 26 25 24 23 22 21 20 19 18 17 16 15 14 13 12 11 10 9 8 7 6 5 4 3 2 1

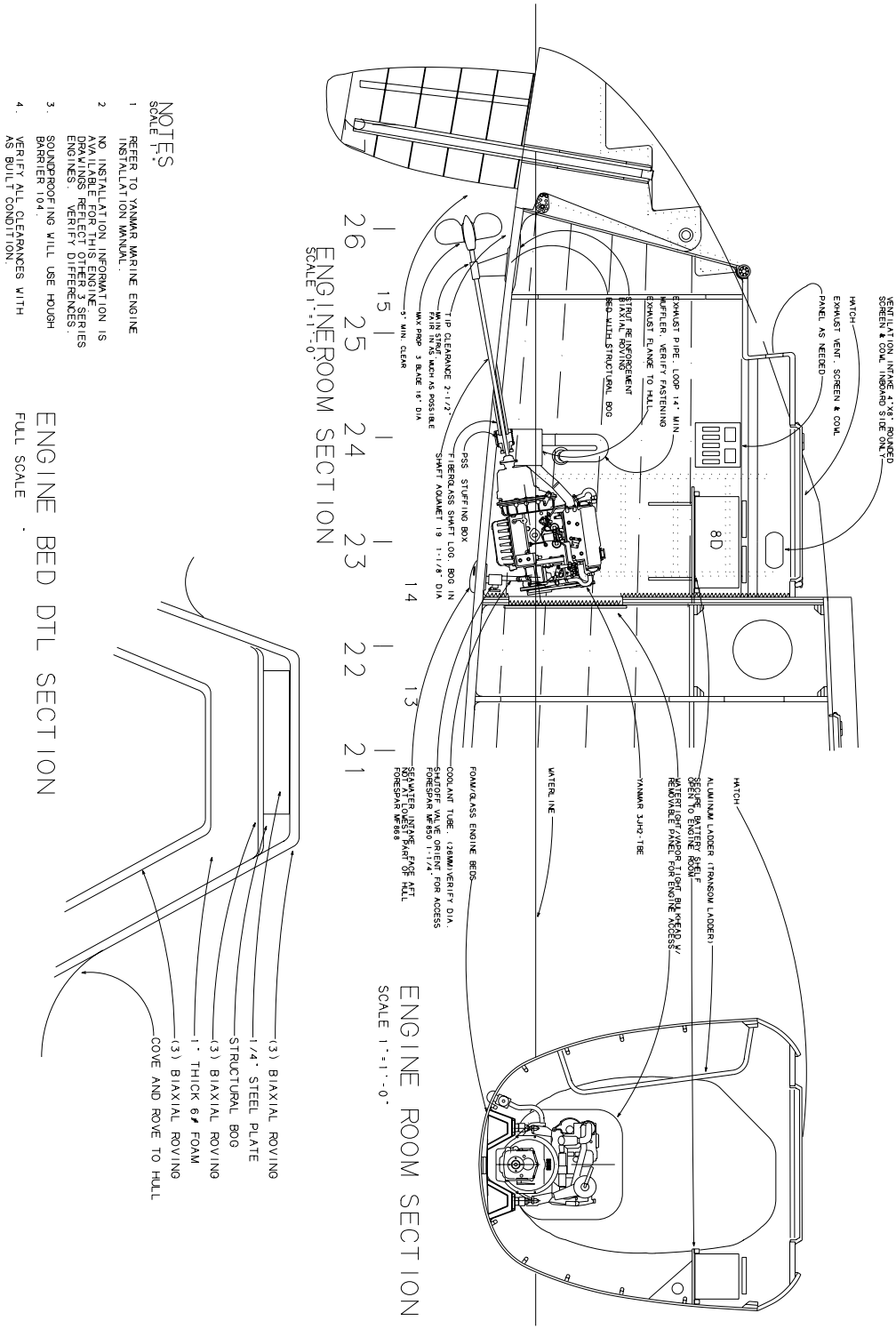


DECK HARDWARE

KHSD 55' CATAMARAN for CAREN & MARTIN HANSSMANN

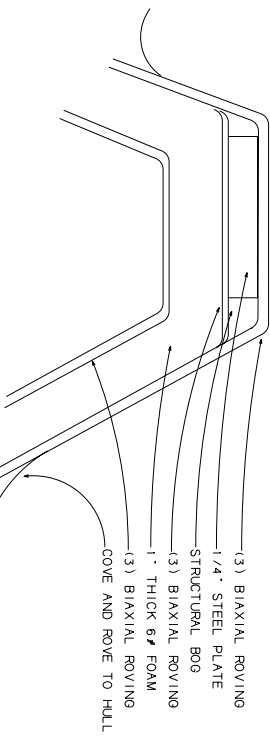
07/12/'93
05/12/'93
12/12/'92

KURT HUGHES SAILING DESIGNS • 612 1/2 W. MCGRAW, SEATTLE, WA, 98119 USA (206)284-6346 FAX-(206)283-4106



- NOTES**
1. REFER TO YANMAR MARINE ENGINE INSTALLATION MANUAL.
 2. NO INSTALLATION INFORMATION IS AVAILABLE FOR THIS ENGINE. DRAWINGS REFLECT OTHER 3-SERIES ENGINES. VERIFY DIMENSIONS.
 3. SOUNDPROOFING WILL USE HOUGH BARRIER 104.
 4. VERIFY ALL CLEARANCES WITH AS BUILT CONDITION.

ENGINE BED DTL SECTION
FULL SCALE

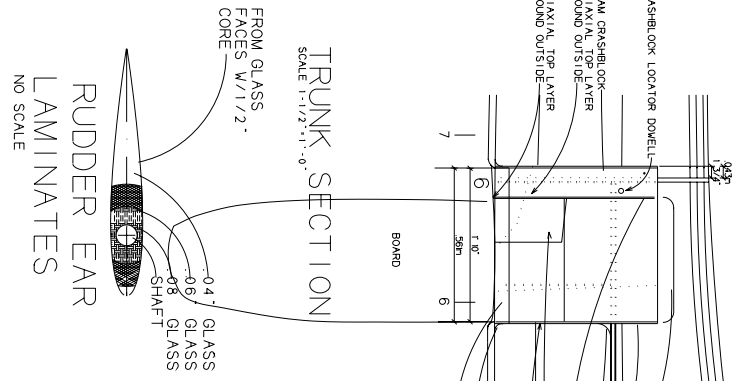
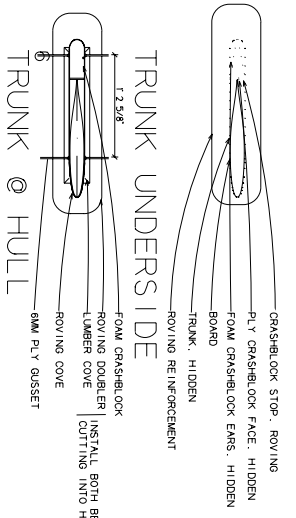
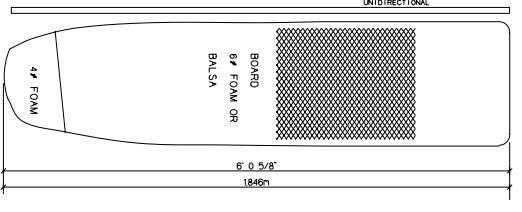
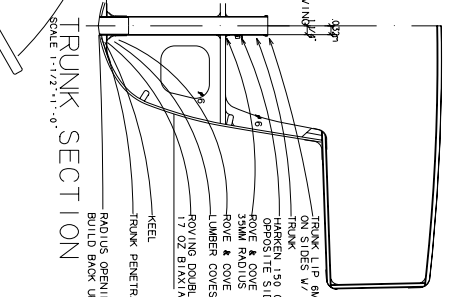
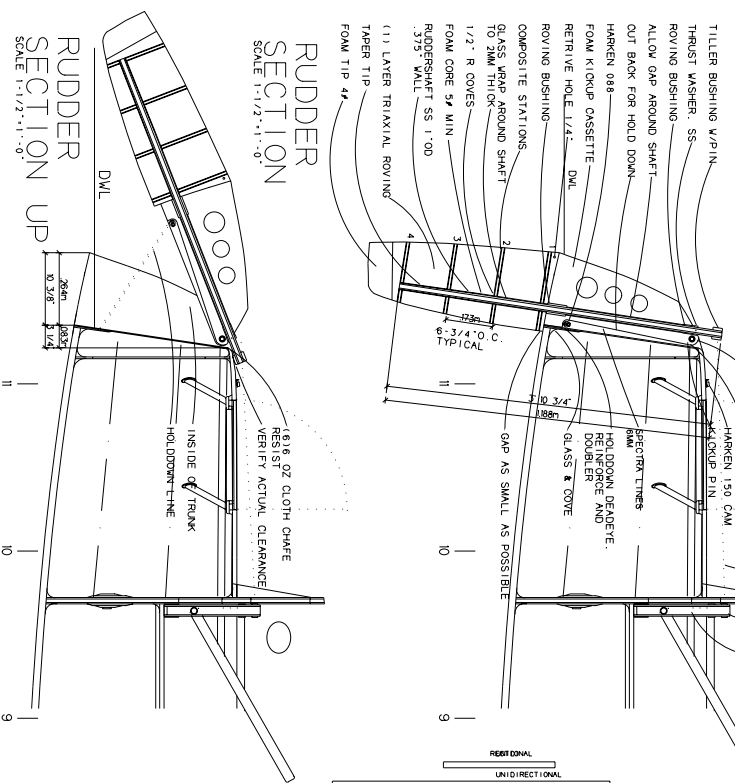
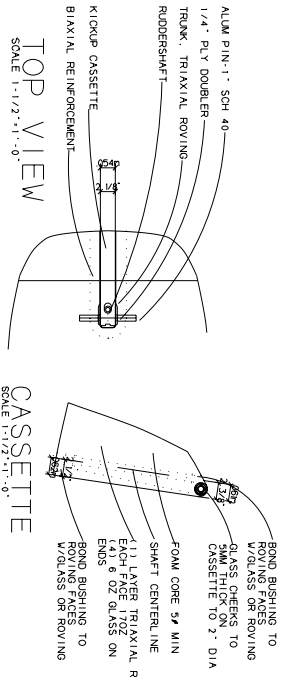


ENGINE

KHSD

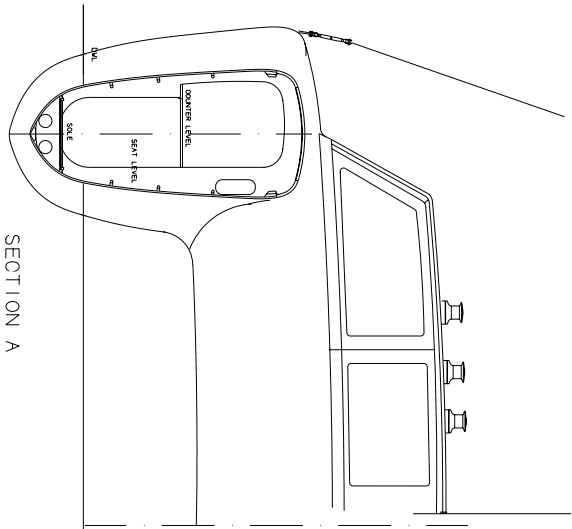
55' CATAMARAN for CAREN & MARTIN HANSMANN

10/12/'93

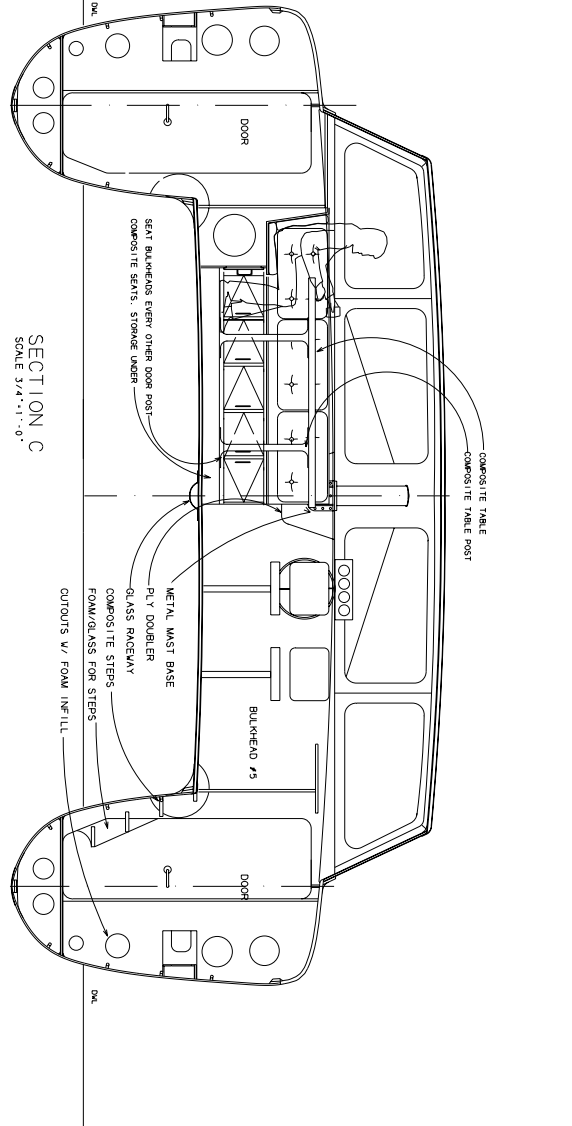


NOTES

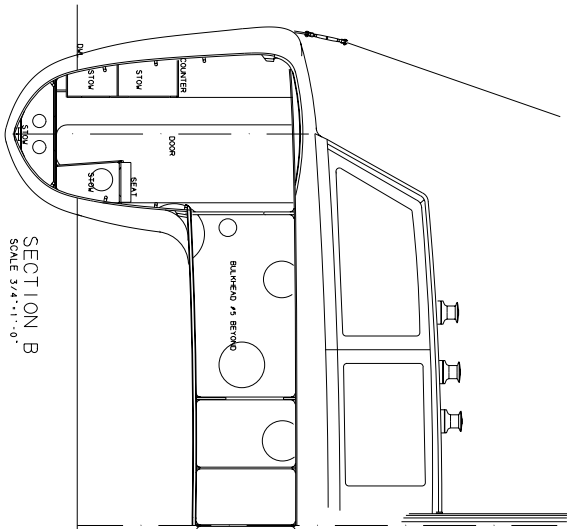
- SEE LAMINATE SCHEDULE FOR BOARD
- IF BOARD IS BALSAL CORE, MAKE THE LEADING AND TRAILING EDGES 6# W/ 1/2\"/>



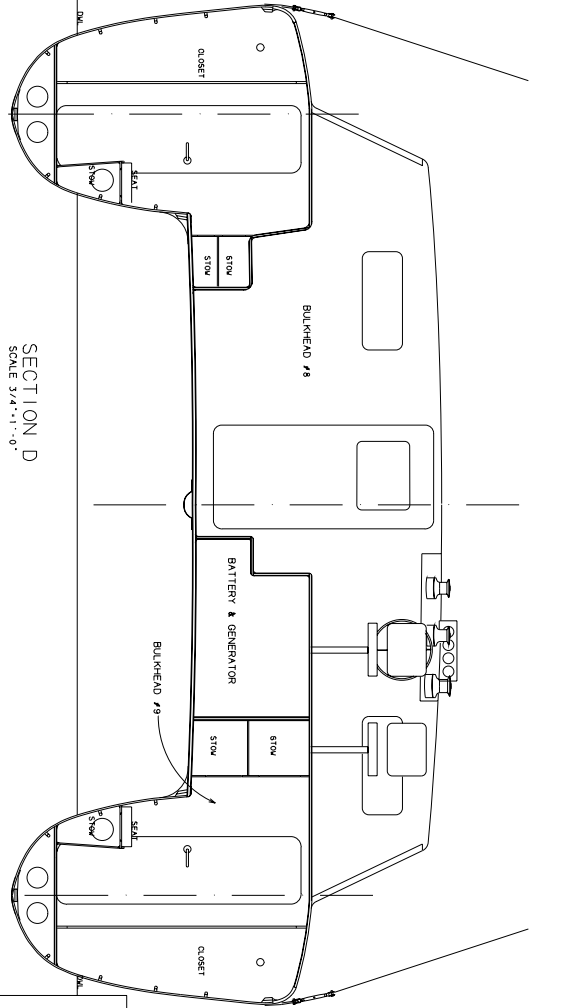
SECTION A
SCALE 3/4"=1'-0"



SECTION C
SCALE 3/4"=1'-0"



SECTION B
SCALE 3/4"=1'-0"



SECTION D
SCALE 3/4"=1'-0"

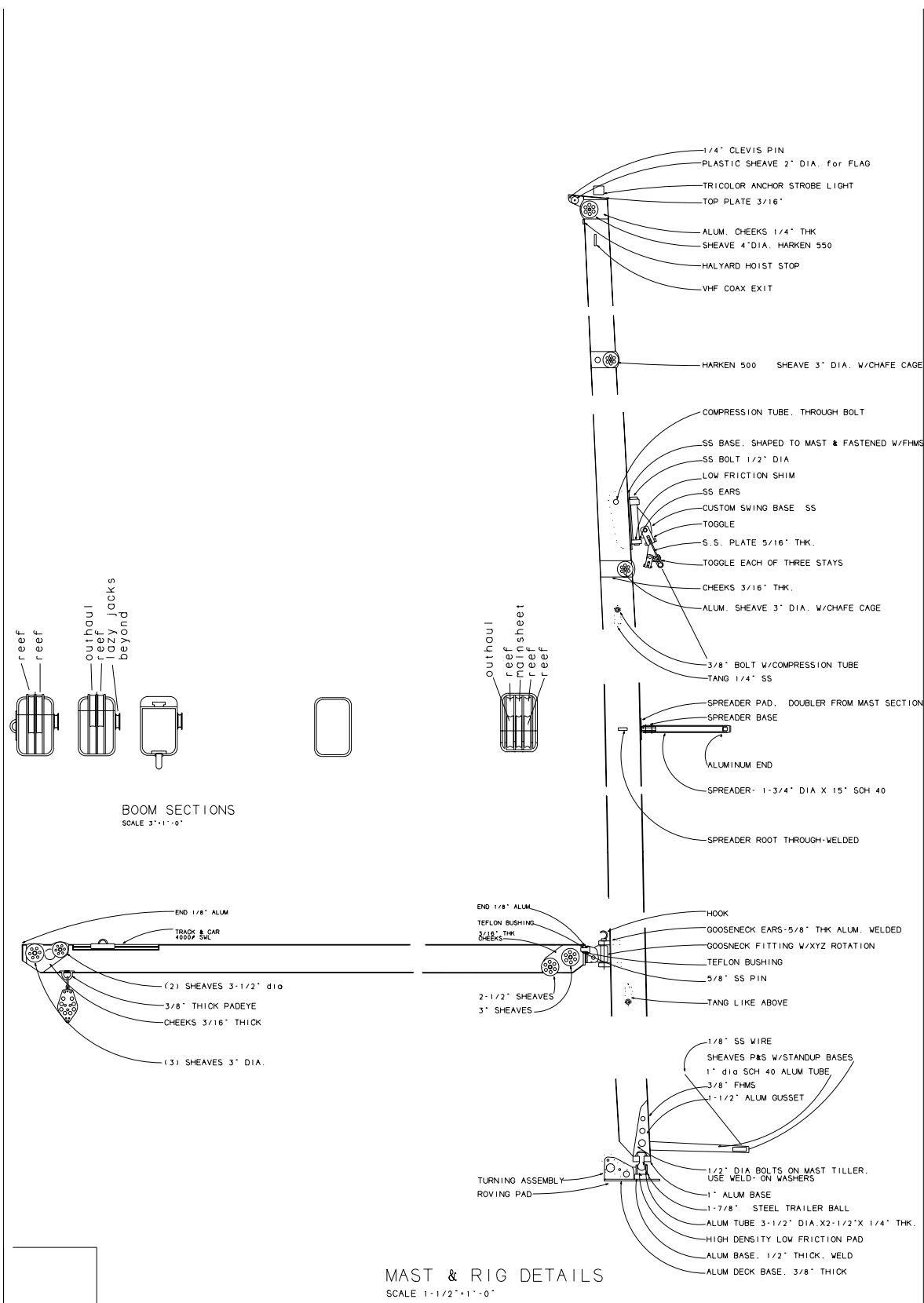
SECTIONS

KHSD

45' CATAMARAN

KURT HUGHES SAILING DESIGNS - 612 1/2 W. McGRAW, SEATTLE, WA, 98119 USA (206) 284-6346 FAX - (206) 283-4106

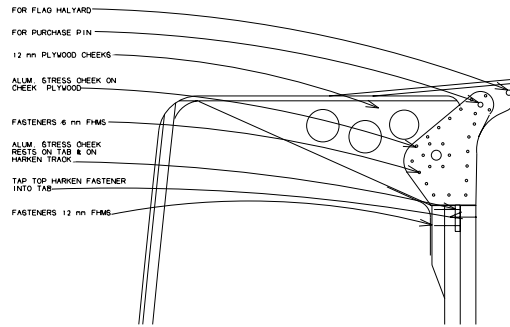
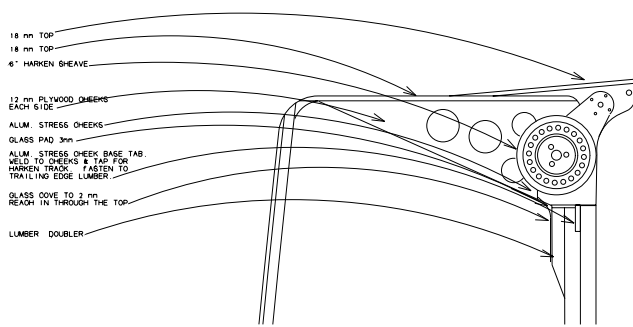
03/02/'95
02/02/'93



MAST DETAIL

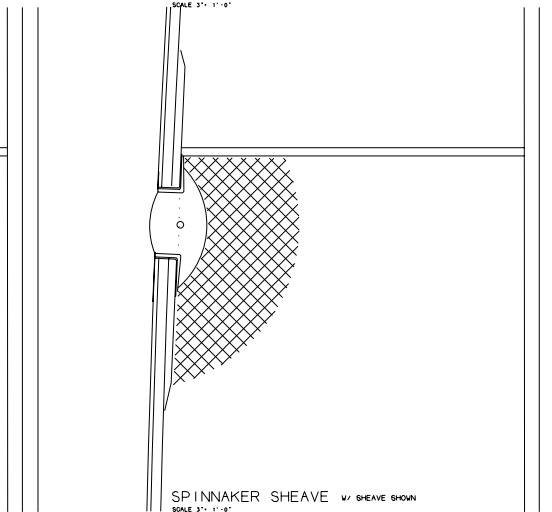
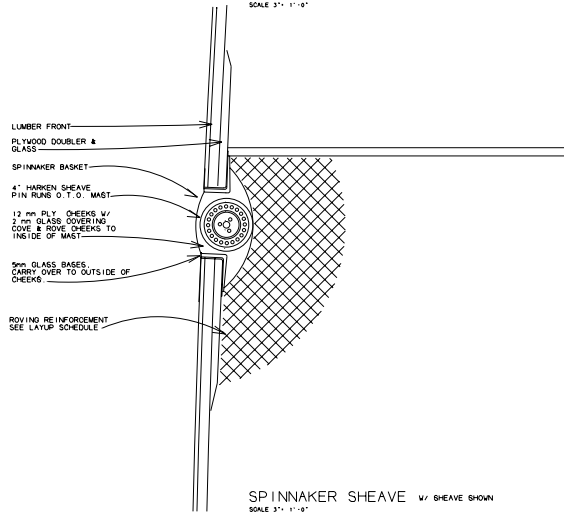
KHSD 36' CATAMARAN

08/12/'93
11/12/'92



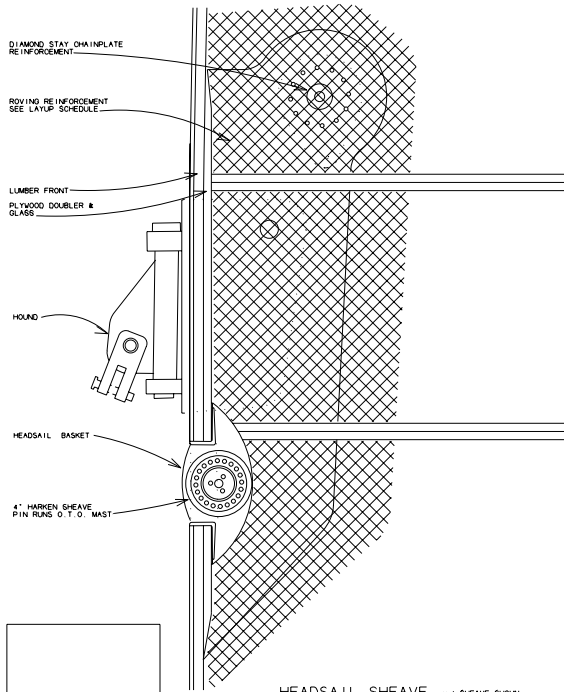
MASTHEAD w/ SHEAVE SHOWN
SCALE 3" = 1'-0"

MASTHEAD w/ SHEAVE DONE
SCALE 3" = 1'-0"

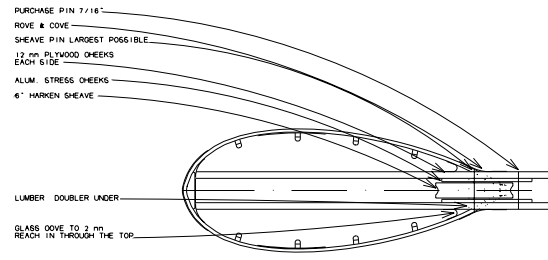


SPINNAKER SHEAVE w/ SHEAVE SHOWN
SCALE 3" = 1'-0"

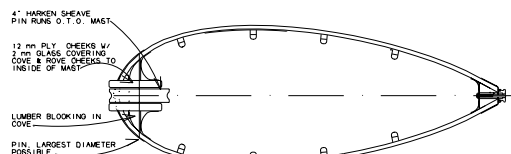
SPINNAKER SHEAVE w/ SHEAVE DONE
SCALE 3" = 1'-0"



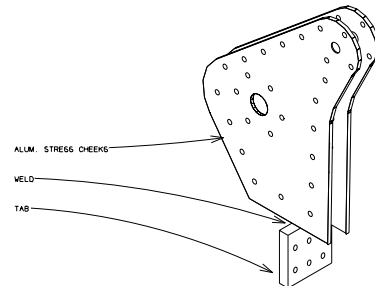
HEADSAIL SHEAVE w/ SHEAVE SHOWN
SCALE 3" = 1'-0"



WING SECTION @ MASTHEAD
SCALE 3" = 1'-0"



WING SECTION @ SHEAVES
SCALE 3" = 1'-0"



MASTHEAD CHEEKS & TAB
NO SCALE

SHEAVE DETAILS

KHSD

a CYLINDER MOLDD WINGMAST

07/24/93